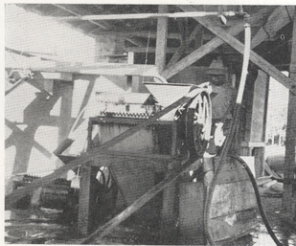
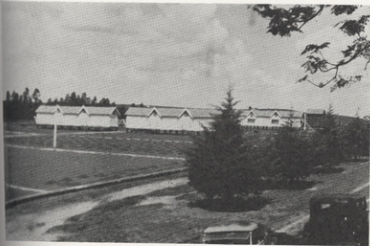


# Crop Handling Takes Forward Steps in Brazil



## Scenes of Crop Improvement and Preparation in Brazil

The Santo Andre Coffee Factory illustrated at the top of the page is operated by the Sao Paulo Cooperative Coffee Federation with the assistance of the DNC Technical Service. It is equipped with every device for sanitary and precise handling of the crop.

(Above left) The fazenda of Dr. Luiz Piza Sobrinho, former President of the DNC. This fazenda located in the new coffee zone of Pirajuhy is a model of modern equipment.

(Above right) Pulping coffee on fazenda of Dr. Joaquim de Barros Alcantara. This method entitles the product to preferential handling in shipping coffee from interior points.

At the right—New rubber-tired spreading trucks have made their appearance on the drying grounds.

Below (Left)—A mechanical dryer in use. (Center) Machinery for culling and grading coffees at Sto. Andre. (Right) Automatic weighing and bagging machinery at Sto. Andre plant.

