

# Gene expression profile during coffee fruit development and identification of candidate markers for phenological stages

Cristiana de Gaspari-Pezzopane<sup>(1)</sup>, Nemailla Bonturi<sup>(2)</sup>, Oliveiro Guerreiro Filho<sup>(2)</sup>, José Laércio Favarin<sup>(1)</sup> and Mirian Perez Maluf<sup>(3)</sup>

<sup>(1)</sup>Universidade de São Paulo, Escola Superior de Agricultura Luiz de Queiroz, Departamento de Produção Vegetal, Avenida Pádua Dias, nº 11, CEP 13480-900 Piracicaba, SP, Brazil. E-mail: cristiana.gaspari@gmail.com, favarin.esalq@usp.br <sup>(2)</sup>Instituto Agronômico, Centro de Café Alcides Carvalho, Avenida Barão de Itapura, nº 1.481, Caixa Postal 28, CEP 13012-970 Campinas, SP, Brazil. E-mail: nebonturi@yahoo.com.br, oliveiro@iac.sp.gov.br <sup>(3)</sup>Embrapa Café, Centro de Café Alcides Carvalho, Avenida Barão de Itapura, nº 1.481, Caixa Postal 28, CEP 13012-970 Campinas, SP, Brazil. E-mail: mirian.maluf@embrapa.br

**Abstract** – The objective of this work was to identify genes that could be used as suitable markers for molecular recognition of phenological stages during coffee (*Coffea arabica*) fruit development. Four cultivars were evaluated as to their differential expression of genes associated to fruit development and maturation processes. Gene expression was characterized by both semi-quantitative and quantitative RT-PCR, in fruit harvested at seven different developmental stages, during three different seasons. No size polymorphisms or differential expression were observed among the cultivars for the evaluated genes; however, distinct expression profiles along fruit development were determined for each gene. Four out of the 28 evaluated genes exhibited a regular expression profile in all cultivars and harvest seasons, and, therefore, they were validated as candidate phenological markers of coffee fruit. The gene *α-galactosidase* can be used as a marker of green stage, *caffeine synthase* as a marker of transition to green and yellowish-green stages, and *isocitrate lyase* and *ethylene receptor 3* as markers of late maturation.

**Index terms:** *Coffea arabica*, cup quality, differential expression, fruit phenology, ripening, qRT-PCR.

## Perfil da expressão gênica durante o desenvolvimento de frutos de café e identificação de genes marcadores para fases fenológicas

**Resumo** – O objetivo deste trabalho foi identificar genes que possam ser utilizados como marcadores moleculares para reconhecimento de fases fenológicas, durante o desenvolvimento de frutos do cafeeiro (*Coffea arabica*). Quatro cultivares foram avaliadas quanto à expressão diferencial de genes associados a processos de desenvolvimento e maturação de frutos. A caracterização da expressão gênica foi realizada pelas técnicas de RT-PCR semi-quantitativa e quantitativa, em frutos coletados em sete estádios de desenvolvimento, durante três safras. Não foi observado nenhum polimorfismo de tamanho ou expressão diferencial entre as cultivares, para os genes avaliados; porém, perfis de expressão distintos durante o desenvolvimento dos frutos foram determinados para cada gene. Quatro entre os 28 genes avaliados apresentaram perfil de expressão constante, em todas as cultivares e safras e, portanto, foram validados como genes candidatos a marcadores fenológicos de frutos de cafeeiro. O gene *α-galactosidase* pode ser usado como marcador do estágio de fruto verde, o gene de *caféina sintase* como marcador do estágio de transição entre fruto verde e fruto verde-cana, e o *isocitrato liase* e o *etileno-receptor 3* como marcadores das fases finais de maturação.

**Termos para indexação:** *Coffea arabica*, qualidade de bebida, expressão diferencial, fenologia do fruto, amadurecimento, qRT-PCR.

### Introduction

The phenological cycle of coffee fruit, especially those of *Coffea arabica* L., exhibits two markedly distinct phases: one reproductive and other vegetative, both occurring simultaneously (Camargo & Camargo, 2001). The reproductive phase is characterized by the occurrence of several blooms, one of which has

a more intense flowering than the others. The major problem associated with this discontinuous flowering is the nonsynchronization of fruit development and maturation, which affects harvesting and the overall cup-quality production.

Currently, a phenological scale based on visual aspects of coffee fruit is the only tool available to experimentally identify all stages and substages

occurring during its development (Pezzopane et al., 2003). The scale was based on photographic images and visual description of each stage. As this criterion is not adequate for physiological and molecular studies, the establishment of other criteria, with precise identification of phenological stages during fruit development, is interesting for molecular studies of coffee.

According to physiological parameters, fruit development is a well-orchestrated process, whose steps are: growth, comprising fruit enlargement; maturation associated with physiological maturity, corresponding to the stage in which fruit continues its development even when removed from the plant; ripening, when global characteristics related to fruit appearance and quality – such as chemical composition, colour, texture, flavour, aroma – are determined; and senescence, characterized by a series of events that culminates with cellular death (Castro et al., 2005).

In *C. arabica* cultivars, fruit takes from 6 to 8 months to complete development. The process initiates at the fecundation with perisperm development and cellular division of endosperm cells. The fruit stages of pinhead and expansion follow this initial development. In the green stage, the elongation of endosperm cells and a gradual loss of the perisperm tissue are observed. During the final phase, which corresponds to the yellowish-green to cherry fruit stages, occurs the pericarp maturation, characterized by endosperm hardening, gradual accumulation of storage proteins, and synthesis of sucrose and complex polycarbohydrates, pigments, and chlorophyll degradation (Pezzopane et al., 2003; De Castro & Marraccini, 2006).

Gene expression during development of both climacteric and nonclimacteric fruit has been widely investigated. Using techniques for large-scale analysis of gene expression, the role of several genes in regulating fruit maturation and ripening has been established. For instance, an extensive analysis of *Lycopersicum*, including a broad metabolic profile and transcriptome analysis, was performed in developing fruit (Carrari et al., 2006). The analyses showed that metabolite levels are shifted during fruit ripening by a coordination of functional pathways, indicating a precise regulation of metabolic activity. However, transcript accumulation of genes associated with those pathways are not as strictly coordinated as metabolite

accumulation, suggesting that post-translational mechanisms may be significant for metabolic regulation. Overall, a linear association was observed between ripening-associated transcripts and specific metabolites.

Despite the fact that cup-quality coffee is largely dependent on fruit development and final chemical composition, few studies regarding genetic and physiological control of maturation and ripening are available for coffee, although fruit-specific EST collections are available from two large-scale sequencing projects: Harvest (Lin et al., 2005), and Brazilian Coffee Genome Database (Vieira et al., 2006). An important study used microarrays and real-time RT-PCR approaches to characterize transcriptome profiles of coffee seeds during fruit development (Salmona et al., 2008). Statistical analyses of expression profiles from each evaluated stage allowed gene clustering in functional groups associated with seed development events. Also, the authors suggested the occurrence of genetic mechanisms controlling the transcriptional transitions throughout fruit development, and identified several candidate genes to regulate these events.

Besides the contribution to understand the molecular aspects underlying fruit development, knowledge of the genetic control of those processes is important to provide new tools for selecting cultivars with improved agronomic traits, such as uniform and controlled maturation, and defined chemical composition of grains.

The objective of this work was to identify genes that could be used as suitable markers for molecular recognition of phenological stages during coffee fruit development.

## Materials and Methods

Coffee fruit were sampled from experimental fields of the Instituto Agrônômico (IAC) (22°50'S, 47°00'W, at 854 m) and evaluated during three different seasons: 2004/2005, 2005/2006 and 2007/2008. The *C. arabica* cultivars – Mundo Novo IAC 388-17 (MN), Catuaí Vermelho IAC 144 (CV), Icatu Vermelho IAC 4045 (IV), and Obatã IAC 1669-20 (OB) – were evaluated in all seasons, and the cultivar Icatu Precoce IAC 3282 (IP) was evaluated only in the 2005/2006 season. All cultivars were planted in August/2000, without shading, with

3,5 m spacing between rows and 0,8 m between plants. Information regarding cultivar origin and genetic relationships is reviewed by Medina-Filho et al. (2007).

Fruit were collected from ten coffee plants, at different stages of growing, development and ripening, according to the phenological scale proposed by Pezzopane et al. (2003). Analysed fruit stages were: green, yellowish-green and cherry, in the 2004/2005 crop season; and ovary, pinhead, expansion and seed endosperm, in the 2005/2006 crop season. Candidates for phenological gene markers were validated from coffee fruit randomly collected from ten plants, during the 2007/2008 harvest, at green, expansion and cherry stages. After harvesting, fruit were immediately frozen and kept at  $-80^{\circ}\text{C}$ .

Characterized gene sequences from coffee and other species, associated with fruit development and ripening, were retrieved from the GenBank and used in directed blast searches in Brazilian Coffee Genome Database (Altschul et al., 1990; Vieira et al., 2006). Genes were selected from previous information in the literature, as to their function during fruit development in several plant species. A list of selected genes, accession number and amount of homolog ESTs is on Table 1. Homolog coffee ESTs were identified and determined based on stringent similarity parameters – such as  $e\text{-value} < e^{-20}$  –, presence of protein-specific domains, and relative abundance on libraries containing fruit tissues. In order to select gene-specific primers, positive EST sequences were clustered and realigned with corresponding genes, and highly conserved regions were identified. Coffee-based primer pairs were then selected from those regions.

Total RNA was extracted from 2.0 g of frozen fruit using a LiCl-based protocol (Chang et al., 1993). RNA quantification was performed by formaldehyde-agarose electrophoresis at 220–340 nm absorbance, using a Shimadzu UV-1700 spectrophotometer (Shimadzu, Kyoto, Japan).

Gene expression analysis was evaluated both by semi-quantitative and quantitative RT-PCR. Gene-specific primers are listed on Table 1. A total of 400 ng RNA DNase-free, from each sample, were used for cDNA synthesis using the commercial kit SuperScript III First-Strand Synthesis SuperMix (Invitrogen, Carlsbad, CA, USA).

Semi-quantitative RT-PCR conditions for amplification of fruit transcripts were: 1  $\mu\text{L}$  of cDNA, 1X reaction buffer, 2  $\text{mmol L}^{-1}$   $\text{MgCl}_2$ , 2  $\text{mmol L}^{-1}$  dNTP, 1 pmol of each primer, 0.25 U of Taq polymerase. Reactions were performed by 5 min at  $95^{\circ}\text{C}$ , followed by 30 cycles of 1 min at  $95^{\circ}\text{C}$ , 1 min at  $54^{\circ}\text{C}$ , and 1 min at  $72^{\circ}\text{C}$ . Actin-specific primers (forward 5'-GACCTCACAGATCACCTCAT-3', reverse 5'-GTAGTCTCGTGGATAACCAGC-3') were used as internal control for both RNA integrity and initial concentration. Transcript evaluation was performed by comparing fragment presence/absence, and by visual intensity of stained band. At least three independent reactions were evaluated for each primer and sample.

Quantitative RT-PCR (qRT-PCR) was performed in an AB7300 System (Applied Biosystems, Foster City, CA, USA) using the Sybr Green kit (Invitrogen, Carlsbad, CA, USA), which include both SYBR green and passive reference ROX fluorescence. Reaction conditions are the same as described by Maluf et al., 2009. In order to confirm the presence of single amplicons, all PCR products were analyzed through a dissociation curve, with temperature varying from 60 to  $95^{\circ}\text{C}$ . Results of qRT-PCR were analyzed with the sequence detection software SDS version 1.3.1 (Applied Biosystems), and transcript abundance was estimated using defined threshold value, baseline, and fractional cycle number (Ct value) parameters (Maluf et al., 2009). The *GAPDH* gene was used as the endogenous control (Barsalobres-Cavallari et al., 2009).

Relative expression quantification was calculated using average values of three replicates, for each stage, where each amplification was performed using a fresh cDNA pool, with the same amounts of cDNA from three different synthesis reactions. Relative expression was calculated using the expansion stage of each cultivar as the calibrator sample.

For the statistical analysis, only data from the absolute expression levels were used. Absolute expression levels for each gene were the result of Ct value of target gene divided by the Ct value of the calibrator gene (*GAPDH*). Statistical analysis was individually performed for 2005/2006 and 2007/2008 seasons, according to a completely randomized factorial design using Statistica (StatSoft, 1998).

**Table 1.** List of the 28 genes with corresponding homologs, number of ESTs, selected primers, and expected size of PCR products.

Gene	Organism	Accession	EST	Primers	Size (bp)
<i>aba deficient 3 (ABA3)</i>	<i>A. thaliana</i>	NM101519	6	F-GGAGCACTAGCGGTGAAATC R-CAGCCTTGAAATCCTGTTC	300
<i>1-aminocyclopropane-1-carboxylate oxidase (ACO)</i>	<i>L. esculentum</i>	AB013101	31	F-GCTCCTGTTGGACTTGCTAT R-ACCTTGTCATCCTGGAACAG	250
<i>1-aminocyclopropane-1-carboxylate synthase (ACS)</i>	<i>L. esculentum</i>	AB013100	2	F-CTTCACTTGACAAGGCCACT R-GATTTTCTGCGAGTCCCATC	310
<i>alcohol acyltransferase (AAT)</i>	<i>L. esculentum</i>	AY534531	6	F-CCCTCCAGCTGAAGAAACAC R-CGCCTGGAACATCATAAACC	320
<i>auxin response factor (ARF)</i>	<i>A. thaliana</i>	AF042196	2	F-CTCATGCTGCGGCTACTAA R-TCATCCCAGCCAACCTTA	250
<i>glutamine-dependent asparagine synthetase (ASN1)</i>	<i>A. thaliana</i>	NM180333	7	F-CTCGAGGGATCTCCAGATTT R-GCCCTCAAGCAATCATACTG	340
<i>caffeine synthase (CS)</i>	<i>C. arabica</i>	AB086414	66	F-GCCGAATGCTCCTTACTTTC R-CAGGATACAGGGGAATGGGATC	300
<i>caffeoyl-CoA-methyltransferase (CCoAOMT1)</i>	<i>C. canephora</i>	EF153933	28	F-ACCAGCGTGTATCCAAGA R-GCCTTCCCTGAAGTCAAT	300
<i>catalase 2 (CAT)</i>	<i>L. esculentum</i>	AF112368	155	F-GCCGGTTGGTATTGAACAAG R-CAGTAGAGGGGATGGGATGC	300
<i>chalcone synthase (CHS)</i>	<i>L. esculentum</i>	X55194	111	F-GAACAGCTACGCCACCAAAAT R-CAGGCATGTCCACACCACTA	340
<i>4-coumarate-CoA ligase (4CL)</i>	<i>C. arabica</i>	AM117807	7	F-AGTCATGTGCACCTGATGC R-CTCTTAGCCCAAAAGCA	300
<i>11S protein reserve (CSP1)</i>	<i>C. arabica</i>	Y16976	43	F-CAGCAGCCTCCAACCTTAGTG R-CGCTGAAAATTTGAAAAGAG	350
<i>dehydrin (DH)</i>	<i>C. canephora</i>	DQ333960	22	F-CATGCTTCATCGCTCTGGTA R-TCCTTCTTCTCGTGCTGCT	230
<i>late embryogenesis abundant (EMB3)</i>	<i>Picea glauca</i>	L47601	20	F-GCCATCAAGGAGAAAAGAGGA R-CTTGACAGTCTCGGAACCAT	330
<i>(1-4)-beta-mannan endohydrolase (MAN-B)</i>	<i>C. arabica</i>	AJ278996	13	F-CCTTGCAGTATGCTCCTGGT R-CTTCCGAAGGATCTGAGGT	340
<i>late embryogenesis abundant 5 (ER5)</i>	<i>L. esculentum</i>	U77719	9	F-GTAGCTGCTTCGGCAAAGTC R-CCGGTCAGGATCAAGAACAC	330
<i>ethylene-responsive factor (ERF)</i>	<i>L. esculentum</i>	AY192367	15	F-CTGAGATCCGTGACCCAAG R-GCTGAAGTCTTTGCTGGT	300
<i>ethylene receptor (ETR/NR)</i>	<i>L. esculentum</i>	U38666	1	F-GAGATGGTCCCTGCATGTTA R-TTGCTCGTCTTGACCATAGC	370
<i>α-galactosidase (GAL)</i>	<i>C. arabica</i>	L27992	6	F-CAGGAACCGAGGATTACA R-AGTTCTGCCCAACAGTCA	200
<i>glutathione reductase (GR)</i>	<i>Pisum sativum</i>	X98274	9	F-CAAGCGGCTACTGTCAAATG R-GCAACTACTGCACGCATCTC	350
<i>gnom (GN)</i>	<i>A. thaliana</i>	NM101264	3	F-GTAGTCGTCTGGTGAAGGC R-CTGCCTTGCTGCATCTATAC	200
<i>isocitrate lyase (ICL)</i>	<i>L. esculentum</i>	U18678	4	F-GGCACAGCATCAAGAACCT R-ATCCAGTATCGCCATCAGC	300
<i>isoflavone synthase (IFS)</i>	<i>Glycine max</i>	AF195799	4	F-GTCCCACAGCATCTTGAACA R-GATCTGTTGCTGCCCTGATT	340
<i>7-methylxanthosine synthase (MS)</i>	<i>C. arabica</i>	AB048793	36	F-ATGCCCGGCTCTTTCTACAG R-CGGGCGTCTAATCAACTCCT	300
<i>phenylalanine lyase (PAL)</i>	<i>C. canephora</i>	AF460203	15	F-TTGAGTTGCAGCCTAAGGAG R-GGGTGGTGCTTCAGTTTATG	280
<i>scarecrow (SCR)</i>	<i>A. thaliana</i>	BT002580	4	F-CTGATGGCGATACGATGCAG R-CTCAAATGGGGTGGACCTTC	300
<i>shoot meristemless (STM)</i>	<i>A. thaliana</i>	NM104916	9	F-GATCAGGCAGATAGCGACAC R-CTGCTTTAGTTGCAACCCAG	300
<i>theobromine synthase (TS)</i>	<i>C. arabica</i>	AB048794	60	F-CCCGTCCAGAAGGCATATTT R-GAGAAGGCAGCATCATAATGGG	320

## Results and Discussion







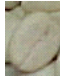
The evaluated cultivars represented both pure *C. arabica* lines – Mundo Novo (MN) and Catuaí Vermelho (CV) – and cultivars derived from interspecific hybrids of *C. arabica* x *C. canephora* – Icatu Vermelho (IV) and Obatã (OB). Besides differences in origin, these cultivars also exhibited specific agronomic traits, such as high (MN and IV) or short height (CV, OB), precocious (IV) or late maturation (OB), and resistance (OB) or susceptibility (MN and CV) to coffee leaf rust.

Initially, a total of 28 candidate genes were selected, aiming to evaluate genes with different functions, and include those associated with embryo development, fruit chemical composition, and fruit development and maturation (Table 1).

Results on transcripts amplification for all evaluated genes are summarized on Table 2 and illustrated on Figure 1. Although expression of all genes was evaluated in the four cultivars, no significant differences were observed among fruit stages, regarding either size polymorphisms or expression intensities and profiles. Therefore, only results related to genes that exhibited a noticeable differential expression for the cultivar Mundo Novo are shown. This cultivar was chosen as the experimental model for all the performed analyses, since it is the oldest cultivar developed by IAC Breeding Program, and also largely cultivated in Brazil.

Almost all evaluated genes exhibited a differential expression pattern along fruit development, although, in most cases, there was no significant difference among cultivars regarding the transcript accumulation profile.

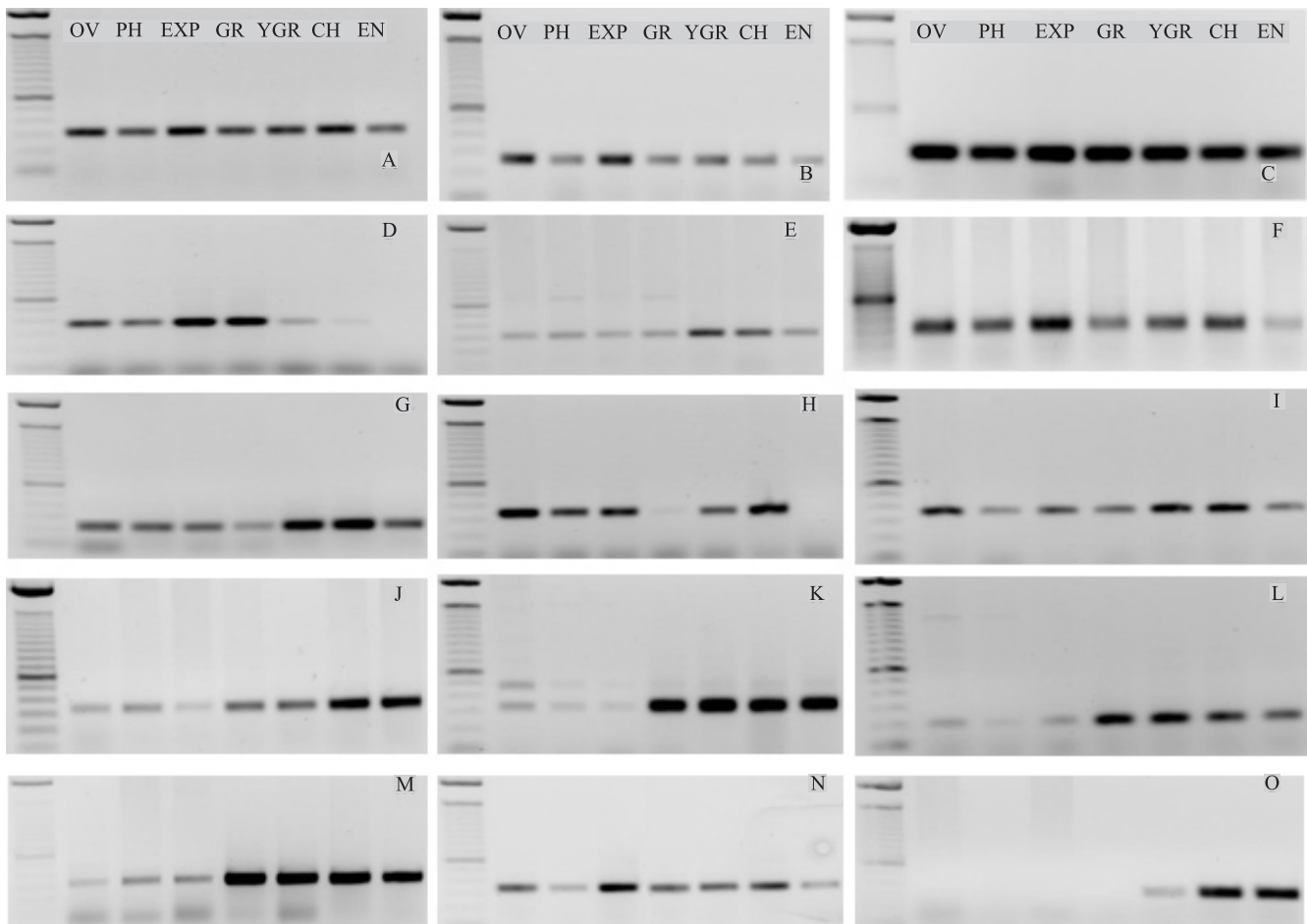
**Table 2.** Fruit stages, phenological phases and gene transcripts accumulation pattern, according to semi-quantitative RT-PCR analysis, performed in fruit collected during the 2005/2006 season: (-) no transcripts, (+/-) low, (+) regular and (++) high accumulation.

Genes	Development				Maturation	Ripening	
							
	Ovary	Pinhead	Expanding	Green	Yellowish-green	Cherry	Endosperm
<i>ABA3</i>	+	+	+	+	+	+	+
<i>ARF</i>	+	+/-	+	+/-	+/-	+/-	+/-
<i>ASNI</i>	+	+	+	+	+	+	+
<i>GN</i>	+	+	+	+	+	+	+
<i>SCR</i>	+	+	+	+	+	+	+
<i>STM</i>	+	+	+	+/-	+	+	+
<i>AAT</i>	+/-	+/-	+/-	+	+	++	++
<i>CHS</i>	+	+	+	-	+	+	-
<i>CS</i>	+/-	+/-	+	++	+/-	-	-
<i>CCoAOMT1</i>	+	+	+	++	++	+	+
<i>4CL</i>	+/-	+	+	+	+	+/-	+/-
<i>GAL</i>	-	-	-	++	++	+	+
<i>IFS</i>	+	+/-	+/-	+/-	+	+/-	+/-
<i>MAN-B</i>	+	+/-	++	+	+	++	+
<i>MS</i>	+	+/-	+	++	+/-	+/-	-
<i>PAL</i>	+	+	++	+/-	+	++	+/-
<i>TS</i>	+/-	+/-	++	++	+	+/-	+/-
<i>ACO</i>	+/-	+/-	+/-	+/-	++	++	+
<i>ACS</i>	+	+	+	+	++	++	+
<i>CAT</i>	+	+	+	+	++	+	+
<i>CSP1</i>	+/-	+/-	+/-	++	++	++	++
<i>DH</i>	+	+	+	+	+	+	+
<i>EMB3</i>	+	+	+	+	+	+	+
<i>ER5</i>	+/-	+/-	+/-	++	++	++	++
<i>ERF</i>	++	+	++	+	+	++	+
<i>ETR</i>	+	+/-	+	+/-	++	++	+
<i>GR</i>	+	+	++	+	+	++	+
<i>ICL</i>	-	-	-	+/-	++	++	++

Genes associated with embryo development (*GN*, *SCR*, *STM*, *ARF* and *ASNI*) and onset germination (*ABA3* and *CAT*) exhibited expression in all fruit stages, without major differences in transcript accumulation. Among the genes implicated in final fruit chemical composition, a decrease of transcript accumulation at final stages of development was observed for *MS*, *TS*, *CS*, *CCoAOMT1* and *4CL*, and was associated with synthesis of caffeine and chlorogenic acids. In contrast, transcript accumulation of genes associated with synthesis of carbohydrates (*GAL* and *MAN-B*) and aromatic compounds (*AAT*) increased during later stages of development. Expression of genes associated with the synthesis of defence secondary metabolites (*PAL*, *CHS* and *IFS*) did not exhibit a regular profile during fruit development, indicating that environment

conditions affected more intensely the expression of these genes. In general, although transcript accumulation profile is stable, small differences can be observed for some genes and also among cultivars. For instance, transcripts of *GAL* are more abundant at green stage in all cultivars except for IV, in which a significant accumulation is observed at green-yellow stage. Also, *GAL* transcript accumulation decreases in cherry stage and in fully mature endosperm of all cultivars. However, genes associated with maturation and germination processes, such as *ETR3*, *ACO*, *ERF*, and *ICL* exhibited a significant transcript accumulation in the cherry and fully mature endosperm stages.

Based on these semi-quantitative results, three stages of fruit development and five genes were selected for further analyses. The criteria for this selection were



**Figure 1.** Transcript accumulation of genes corresponding to development and maturation at different fruit stages of Mundo Novo coffee cultivar, collected during the 2005/2006 season. Fruit stages are ovary (OV), pinhead (PH), expansion (EXP), green (GR), yellowish-green (YGR), cherry (CH) and endosperm (EN). Evaluated genes were: A, *ABA3*; B, *ARF8*; C, *actin*; D, *CS*; E, *ACS*; F, *PAL*; G, *ACO*; H, *CHS*; I, *ETR*; J, *AAT*; K, *ER5*; L, *GAL*; M, *CSP1*; N, *MANB*; O, *ICL*.

the expression profile uniformity among cultivars, differential expression among stages, and metabolic role during fruit maturation. The selected genes were *GAL*, *PAL*, *ICL*, *ETR* and *CS*, besides expansion, green, and cherry fruit stages.

A quantitative RT-PCR analysis was performed in fruit harvested during 2005/2006 and 2007/2008 seasons, in order to validate the results from semi-quantitative RT-PCR. For this, the data sets were analyzed by two different methods – the first one considering the relative quantification of transcripts, and the second one considering the absolute transcript amount.

The first method considered the relative quantification of transcripts, and aimed to verify gene expression profiles along fruit development in each season. In this analysis, the initial fruit stage expansion was selected as the calibrator to establish the accumulation profile. The values of relative quantification are exhibited on Table 3. For all target genes, the expression profile was identical in fruit harvested during both seasons, since accumulation peaks were observed at the

same fruit stages. Differences on relative transcript amounts observed for all genes may be associated with differences on overall expression activity due to environmental conditions. Transcript accumulation of the *CS* gene was higher in earlier stages of fruit development, such as expansion and green stages; afterwards, it was drastically reduced. This gene exhibited the more steady expression pattern, as relative quantification values were constant in both seasons. The expression of *GAL* gene increased markedly on the green stage, and was significantly reduced in expansion and cherry stages. Accumulation pattern for both *ETR* and *ICL* transcripts was very similar, and started at green stage, reaching an accumulation peak during cherry stages. Noteworthy, the cultivar Obatã exhibited very low values of *ETR* transcripts in fruit harvested during 2007/2008, which indicates the later maturation characteristic of this cultivar (Medina-Filho et al., 2007). Transcript accumulation profile of *PAL* gene showed two peaks of expression, one during initial stages of fruit development (expansion), and the other during the late stage (cherry). This was the only

**Table 3.** Relative quantification of gene transcripts in fruit of Arabica cultivars collected at different phenological stages during, 2005/2006 and 2007/2008 seasons. Peaks of transcript accumulation are subscripted.

Gene	Cultivar <sup>(1)</sup>	2005/2006			2007/2008		
		Expansion	Green	Cherry	Expansion	Green	Cherry
<i>GAL</i>	MN	1.00±0.09	<u>46.21±7.61</u>	6.15±3.38	1.00±0.07	<u>33.80±1.66</u>	2.66±0.56
	CV	1.00±0.06	<u>14.24±1.91</u>	0.81±0.21	1.00±0.10	<u>178.27±13.53</u>	1.55±0.17
	IV	1.03±0.32	<u>120.34±13.50</u>	6.02±0.18	1.00±0.07	<u>235.09±28.73</u>	4.50±0.59
	OB	1.01±0.22	<u>22.25±7.69</u>	2.91±0.54	1.01±0.20	<u>24.08±2.83</u>	1.70±0.06
<i>ICL</i>	MN	1.02±0.34	256.10±52.41	<u>3,546.24±433.44</u>	1.06±0.45	26.95±10.65	<u>342.24±57.34</u>
	CV	1.01±0.13	104.29±12.59	<u>213.29±2.09</u>	1.02±0.26	<u>340.12±19.60</u>	220.48±28.54
	IV	1.01±0.20	0.74±0.34	<u>88.88±3.04</u>	1.14±0.70	49.99±11.55	<u>158.70±21.55</u>
	OB	1.02±0.27	10.12±3.03	<u>35.84±0.17</u>	1.08±0.46	95.16±12.28	<u>241.38±61.07</u>
<i>PAL</i>	MN	1.05±0.45	0.04±0.004	0.72±0.16	1.00±0.11	0.003±0.001	2.99±0.39
	CV	1.03±0.32	0.05±0.001	1.29±0.12	1.00±0.03	0.168±0.015	1.73±0.26
	IV	1.05±0.42	0.05±0.004	1.67±0.67	1.02±0.24	0.131±0.037	3.98±0.67
	OB	1.01±0.18	0.16±0.022	6.71±0.72	1.03±0.31	0.122±0.021	3.01±1.16
<i>ETR</i>	MN	1.08±0.55	5.76±1.03	<u>68.76±1.68</u>	1.00±0.01	1.31±0.96	<u>15.51±1.69</u>
	CV	1.04±0.39	6.05±0.34	<u>16.15±0.24</u>	1.02±0.23	1.56±0.14	<u>4.43±0.23</u>
	IV	1.05±0.40	2.66±0.68	<u>30.87±0.30</u>	1.01±0.16	4.68±2.27	<u>31.97±5.76</u>
	OB	1.02±0.22	1.31±0.25	<u>18.41±1.53</u>	1.01±0.19	1.51±0.49	<u>1.98±0.22</u>
<i>CS</i>	MN	1.02±0.29	<u>2.22±0.38</u>	0.01±0.006	1.01±0.15	<u>1.76±0.18</u>	0.01±0.00
	CV	1.03±0.33	<u>2.19±0.16</u>	0.01±0.003	1.00±0.13	<u>3.77±1.12</u>	0.02±0.00
	IV	1.03±0.28	<u>1.67±0.03</u>	0.02±0.01	1.00±0.09	<u>1.94±0.07</u>	0.03±0.00
	OB	1.00±0.86	<u>1.99±0.20</u>	0.01±0.002	1.00±0.07	<u>1.72±0.72</u>	0.01±0.00

<sup>(1)</sup>MN, Mundo Novo; CV, Catuai Vermelho; IV, Icatu Vermelho; OB, Obatã.

selected gene that did not exhibit an increase/decrease profile for transcript accumulation. Also, although the analysis indicates a decrease of transcript accumulation at green stage, the overall differences in values from the other stages are not as expressive as observed in other cultivars.

The second method considered the absolute transcript amount, in order to establish how consistent were the gene expression values in each cultivar, and whether this expression was stable from year to year. The absolute quantification was calculated by dividing the Ct value, detected for a target gene, by the Ct from the endogenous control gene (*GAPDH*). The expression profiles for each gene, in 2005/2006 and 2007/2008, are shown in Figure 2. For all target genes, the absolute transcript amounts in each fruit stage were very similar, in all cultivars and seasons. This analysis confirmed the accumulation profile detected by the transcript relative quantification analyses. Peaks of transcripts were observed at the same fruit stages, in all cultivars, suggesting the occurrence of a conserved mechanism for gene regulation during fruit development. Differences in transcript accumulation profiles were observed in two cases: *ICL* expression in IV cultivar, in the 2005/2006 crop season (Figure 2 A), when the green stage showed lower transcript levels than the expansion stage; and *PAL* expression in fruit of all cultivars harvested on 2007/2008 year (Figure 2 B), when only the cultivar Mundo Novo exhibited the same profile as the 2005/2006 crop season. These differences are probably due to activation of a differential response to environmental conditions, since the cultivars have different genetic backgrounds.

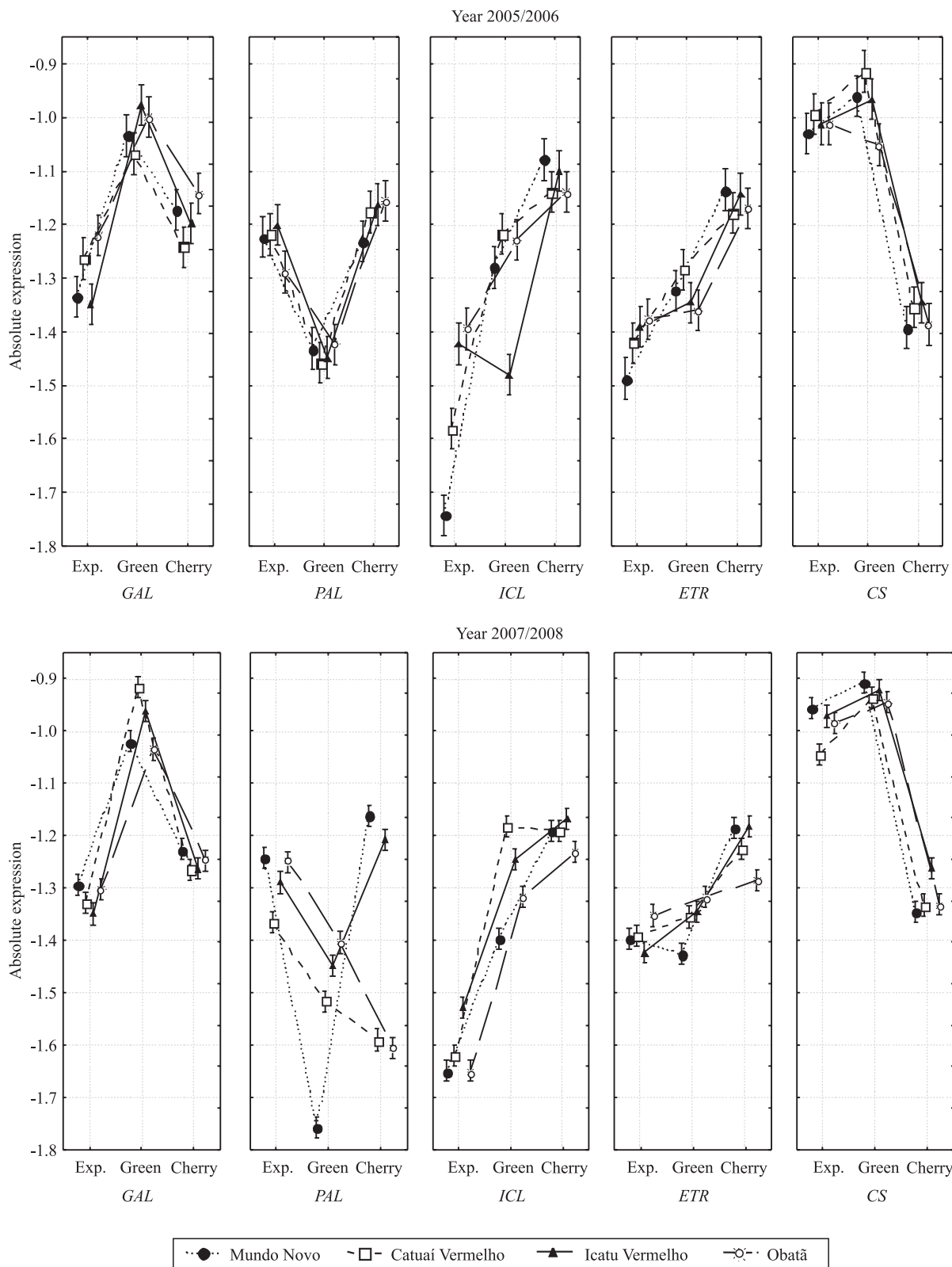
The results of gene expression shown here, especially those related to genes involved in maturation and ripening, corroborate previous classification of coffee as a climacteric species, since coffee fruit exhibited a rapid increase of ethylene levels at the yellowish-green stage, followed by a decrease at cherry stage (Pereira et al., 2005). Also, based on the expression profiles of the analyzed genes, three major transcriptional phases were established. The first phase comprehends fruit differentiation from ovary to expansion fruit stages; the second phase involves the growing and chemical composition of fruit, including green and yellowish-green fruit; and the third phase is represented by maturation and ripening, and the cherry and fully developed endosperm stages.

The observed transcriptional phases corroborate those suggested by Salmona et al. (2008), in which a transcriptional network controlling seed development in *Coffea* is proposed. These authors suggest that this network is controlled by two factors: one including perisperm and endosperm development stages, or from pinhead to green stages; and the other including maturation and ripening stages, or from cherry to fully developed endosperm. Although, in our study, the first factor was separated in two, the physiological events associated to these stages, such as embryogenesis, grain enlargement and filling, are the same. However, the analyses indicated that the last two phases were further associated with specific gene expression. Therefore, expression of genes associated to embryogenesis was observed during all fruit stages. Also, expression of genes involved with chemical composition was preferentially observed during green and yellowish-green stages. Maturation and ripening-related genes, such as those involved in ethylene signalling and response and seed desiccation, accumulated at later stages, especially in cherry fruit. Interestingly, genes involved in the synthesis of defence-related compounds exhibited an irregular expression pattern, indicating that their expression may be affected by environmental factors, as peaks of transcripts were observed during dry and cool weather (April–June).

It is remarkable that all selected genes exhibited a consistent gene expression profile, despite the fact that the evaluated cultivars had different genetic backgrounds (Figure 2). Certainly, some small differences on expression profile were observed, which were minor occurrences – such as a decrease on *ICL* transcripts accumulation in green fruits of cultivar Icatu Vermelho (Figure 2 A) –, and probably, reflected punctual environmental influence. Nevertheless, significant differences were observed on the transcript quantification values (Table 3). In this case, the differences were observed not only among the cultivars but also in a same cultivar, from year to year. These differences may be associated with characteristics such as maturation time and final chemical composition, which are specific to each cultivar (Medina-Filho et al., 2007).

Out of the five genes selected as potentially phenological markers, only the *PAL* gene did not exhibit a regular expression profile in different years (Figure 2), and may not be recommended as a marker.





**Figure 2.** Expression profile of marker genes based on statistical analysis of transcript absolute quantification in fruit at the expansion (Exp.), green, and cherry fruit stages of the cultivars Mundo Novo, Catuaí Vermelho, Icatu Vermelho, and Obatã, collected during 2005/2006 and 2007/2008 seasons.

These differences may be associated with environmental effects and genetic effects, since cultivars of same background exhibited a similar expression profile. Also, *PAL* is a gene family, and the resulting enzyme, phenylalanine ammonia-lyase, is involved in several metabolic processes, including synthesis of defence compound precursors, cell-wall lignification, among others (Logemann et al., 1995).

The other genes exhibited a regular profile in all evaluated cultivars. *CS* expression is concentrated at early stages, decaying rapidly in cherry fruit (Maluf et al., 2009). Caffeine synthesis occurs during the same stages and, although the levels are constant until complete maturation, there is no caffeine synthase activity in mature fruit (Suzuki & Waller, 1984; Koshiro et al., 2006). *GAL* encodes the enzyme  $\alpha$ -galactosidase, responsible for the metabolism of cell-wall polysaccharides, such as galactomannan/mannan (Zhu & Goldstein, 1994; Marracini et al., 2005). The synthesis occurs during the initial and green stages (Pré et al., 2008; Joët et al., 2009), when *GAL* transcripts accumulated in the present work. Expression of *ETR*, a member of ethylene-receptor gene family (Bustamante-Porrás et al., 2007), increased significantly from green to cherry fruit, since they are required during maturation stages, after a peak of ethylene synthesis (Pereira et al., 2005; Chaves & Mello-Farias, 2006). The enzyme isocitrate lyase (ICL), a member of the glyoxylate cycle, is associated with germination (Bytof et al., 2007). In the present work, although gene expression was observed since early stages, major accumulation occurred in cherry fruit (Figure 2).

Quantification of gene-marker expressions, in a given fruit sample, will help to establish more efficiently the maturation stages of these fruit. Together with pos-harvesting processing, this identification can contribute to the development of coffee grains with improved cup quality.

## Conclusions

1. The  $\alpha$ -galactosidase gene can be used as a marker of green stage; the *caffeine synthase* as a marker of transition to green and yellowish-green stages; and the *isocitrate lyase* and *ethylene receptor 3* as markers of late maturation.

2. These genes, in association with phenological and agronomic attributes, can be used as molecular

parameters to assist the selective harvesting, and to help in the identification of specific ripening conditions and possible final chemical grain composition.

## Aknowledgments

To the Consórcio Brasileiro de Pesquisa e Desenvolvimento do Café, for financial support.

## References

- ALTSCHUL, S.F.; GISH, W.; MILLER, W.; MEYERS, E.W.; LIPMAN, D.J. Basic local alignment search tool. **Journal of Molecular Biology**, v.215, p.403-410, 1990.
- BARSALOBRES-CAVALLARI, C.F.; SEVERINO, F.E.; MALUF, M.P.; MAIA, I.G. Identification of suitable internal control genes for expression studies in *Coffea arabica* under different experimental conditions. **BMC Molecular Biology**, v.10, 2009. Doi: 10.1186/1471-2199-10-1.
- BUSTAMANTE-PORRAS, J.; CAMPA, C.; PONCET, V.; NOIROT, M.; LEROY, T.; HAMON, S.; KOCHKO, A. Molecular characterization of an ethylene receptor gene (CcETR1) in coffee trees, its relationship with fruit development and caffeine content. **Molecular Genetics and Genomics**, v.277, p.701-712, 2007.
- BYTOF, G.; KNOPP, S.-E.; KRAMER, D.; BREITENSTEIN, B.; BERGERVOET, J.H.W.; GROOT, S.P.C.; SELMAR, D. Transient occurrence of seed germination processes during coffee post-harvest treatment. **Annals of Botany**, v.100, p.61-66, 2007.
- CAMARGO, Â.P. de; CAMARGO, M.B.P. de. Definição e esquematização das fases fenológicas do cafeeiro arábica nas condições tropicais do Brasil. **Bragantia**, v.60, p.65-68, 2001.
- CARRARI, F.; BAXTER, C.; USADEL, B.; URBANCZYK-WOCHNIAK, E.; ZANOR, M.I.; NUNES-NESI, A.; NIKIFOROVA, V.; CENTERO, D.; RATZKA, A.; PAULY, M.; SWEETLOVE, L.J.; FERNIE, A.R. Integrated analysis of metabolite and transcript levels reveals the metabolic shifts that underlie tomato fruit development and highlight regulatory aspects of metabolic network behavior. **Plant Physiology**, v.142, p.1380-1396, 2006.
- CASTRO, P.R.C.; KLUGE, R.A.; PERES, L.E.P. **Manual de fisiologia vegetal: teoria e prática**. Piracicaba: Agronômica Ceres, 2005. 650p.
- CHANG, S.; PURYEAR, J.; CAIRNEY, J. A simple and efficient method for isolating RNA from pine trees. **Plant Molecular Biology Report**, v.11, p.113-116, 1993.
- CHAVES, A.L.S.; MELLO-FARIAS, P.C. Ethylene and fruit ripening: from illumination to the control of gene expression, more than a century of discoveries. **Genetics and Molecular Biology**, v.29, p.508-515, 2006.
- DE CASTRO, R.D.; MARRACCINI, P. Cytology, biochemistry and molecular changes during coffee fruit development. **Brazilian Journal of Plant Physiology**, v.18, p.175-199, 2006.

- JOËT, T.; LAFFARGUE, A.; SALMONA, J.; DOULBEAU, S.; DESCROIX, F.; BERTRAND, B.; KOCHKO, A.; DUSSERT, S. Metabolic pathways in tropical dicotyledonous albuminous seeds: *Coffea arabica* as a case study. **New Phytologist**, v.182, p.146-162, 2009.
- KOSHIRO, Y.; ZHENG, X.-Q.; WANG, M.-L.; NAGAI, C.; ASHIHARA, H. Changes in content and biosynthetic activity of caffeine and trigonelline during growth and ripening of *Coffea arabica* and *Coffea canephora* fruits. **Plant Science**, v.171, p.242-250, 2006.
- LIN, C.; MUELLER, L.A.; MCCARTHY, J.; CROUZILLAT, D.; PÉTIARD, V.; TANKSLEY, S.D. Coffee and tomato share common gene repertoires as revealed by deep sequencing of seed and cherry transcripts. **Theoretical and Applied Genetics**, v.112, p.114-130, 2005.
- LOGEMANN, E.; PARNISKE, M.; HAHLBROCK, K. Modes of expression and common structural features of the complete phenylalanine ammonia-lyase gene family in parsley. **Proceedings of National Academy of Sciences**, v.92, p.5905-5909, 1995.
- MALUF, M.P.; SILVA, C.C. da; OLIVEIRA, M. de P.A. de; TAVARES, A.G.; SILVAROLLA, M.B.; GUERREIRO-FILHO, O. Altered expression of the caffeine synthase gene in a naturally caffeine-free mutant of *Coffea arabica*. **Genetics and Molecular Biology**, v.32, p.802-810, 2009.
- MARRACCINI, P.; ROGERS, W.J.; CAILLET, V.; DESHAYES, A.; GRANATO, D.; LAUSANNE, F.; LECHAT, S.; PRIDMORE, D.; PÉTIARD, V. Biochemical and molecular characterization of  $\alpha$ -D-galactosidase from coffee beans. **Plant Physiology and Biochemistry**, v.43, p.909-920, 2005.
- MEDINA-FILHO, H.P.; BORDIGNON, R.; GUERREIRO-FILHO, O.; MALUF, M.P.; FAZUOLI, L.C. Breeding of Arabica coffee at IAC, Brazil: objectives, problems and prospects. **Acta Horticulturae**, v.745, p.393-408, 2007.
- PEREIRA, L.F.P.; GALVÃO, R.M.; KOBAYASHI, A.K.; CAÇÃO, S.M.B.; VIEIRA, L.G.E. Ethylene production and acc oxidase gene expression during fruit ripening of *Coffea arabica* L. **Brazilian Journal of Plant Physiology**, v.17, p.283-289, 2005.
- PEZZOPANE, J.R.M.; PEDRO-JÚNIOR, M.J.; THOMAZIELLO, R.A.; CAMARGO, M.B. de P. Escala para avaliação de estádios fenológicos do cafeeiro arábica. **Bragantia**, v.62, p.499-505, 2003.
- PRÉ, M.; CAILLET, V.; SOBILO, J.; MCCARTHY, J. Characterization and expression analysis of genes directing galactomannan synthesis in coffee. **Annals of Botany**, v.102, p.207-220, 2008.
- SALMONA, J.; DUSSERT, S.; DESCROIX, F.; KOCHKO, A.; BERTRAND, B.; JOËT, T. Deciphering transcriptional networks that govern *Coffea arabica* seed development using combine d cDNA array and real-time RT-PCR approaches. **Plant Molecular Biology**, v.66, p.105-124, 2008.
- STATSOFT. **Statistica for Windows**. Version 6.0. Tulsa: StatSoft, 1998.
- SUZUKI, T.; WALLER, G.R. Biosynthesis and biodegradation of caffeine, theobromine, and theophylline in *Coffea arabica* L. fruits. **Journal of Agricultural and Food Chemistry**, v.32, p.845-848, 1984.
- VIEIRA, L.E.G.; ANDRADE, A.C.; COLOMBO, C.A. et al. Brazilian coffee genome project: an EST-based genomic resource. **Brazilian Journal of Plant Physiology**, v.18, p.95-108, 2006.
- ZHU, A.; GOLDSTEIN, J. Cloning and functional expression of a cDNA encoding coffee bean alpha-galactosidase. **Gene**, v.140, p.227-231, 1994.

---

Received on March 14, 2012 and accepted on June 22, 2012